

Vocabulary

To cross - пересекать

To change – изменяться

To Coexist – существовать
одновременно

To represent – изображать,
представлять

To fall – падать, понижаться

To remain steady – оставаться на
одном уровне

To terminate – приводит к чему-
либо

To Form – образовывать

Eutectic – эвтектика

Peritectic – перитектика

Liquidus – линия Ликвидуса

Solidus – линия Солидуса

Alloy – сплав металлов

Solvus – линия расслоения
(твердых растворов)

Solid solution – твердый раствор

Mixture – смесь

Melting

Cooling

Cooling curve

Liquid

Solid

Freezing

Molten – расплавленный

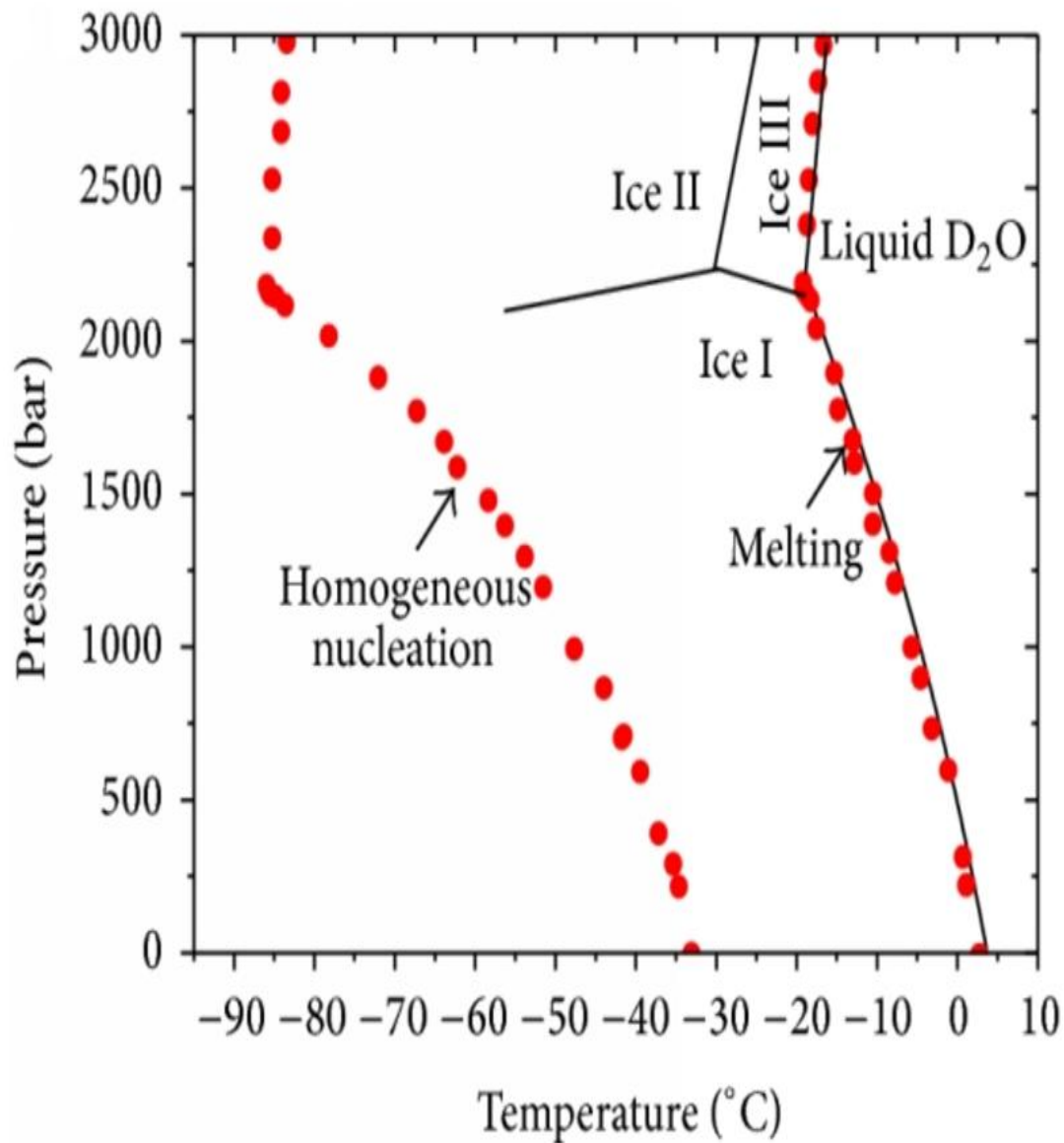
Molten mixture – расплав

One-component (unary) diagram –
однокомпонентная диаграмма

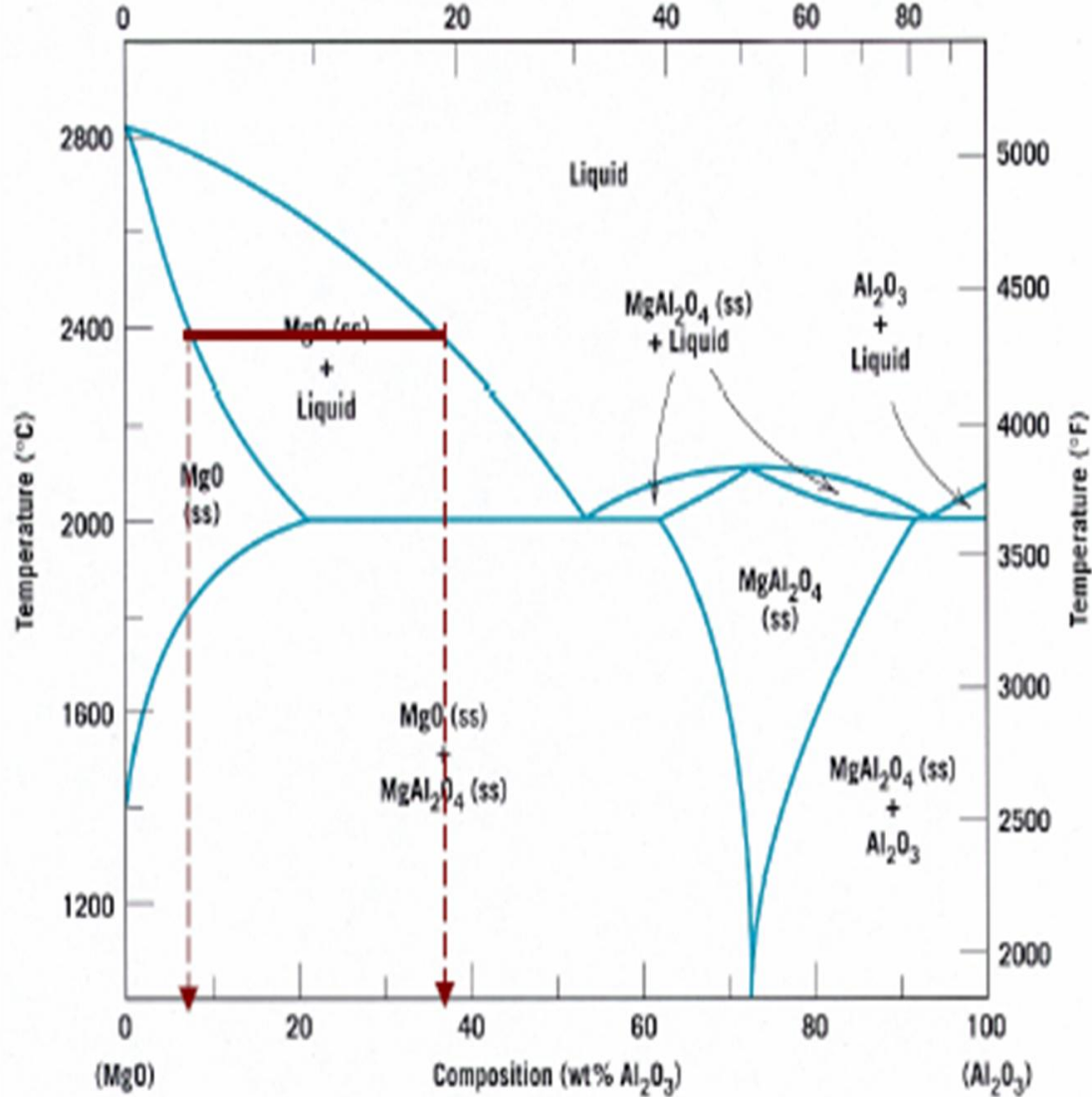
Two-components (binary)–
двухкомпонентная диаграмма

Pure substance - компонент

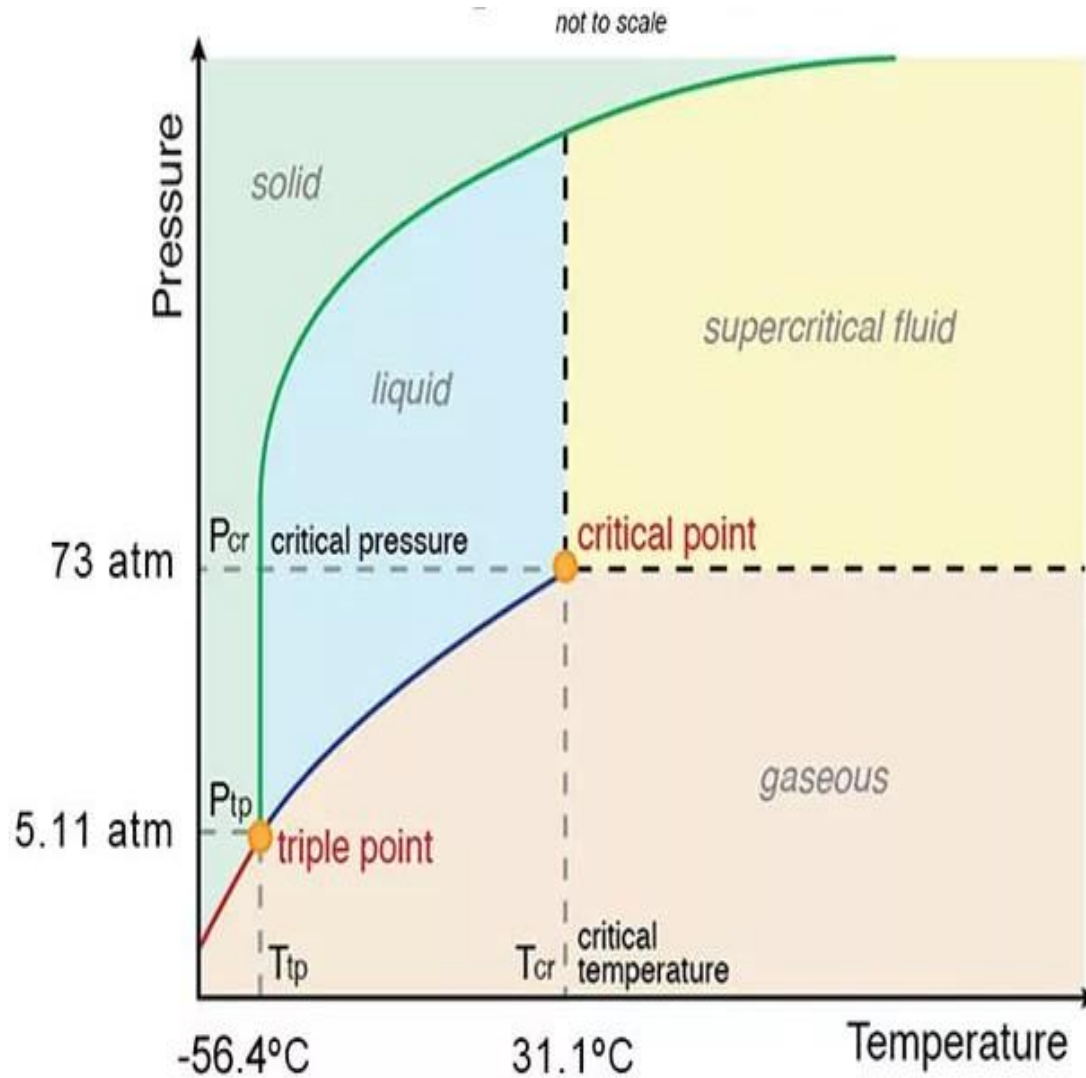
Variation 1 Describe the phase diagram of water



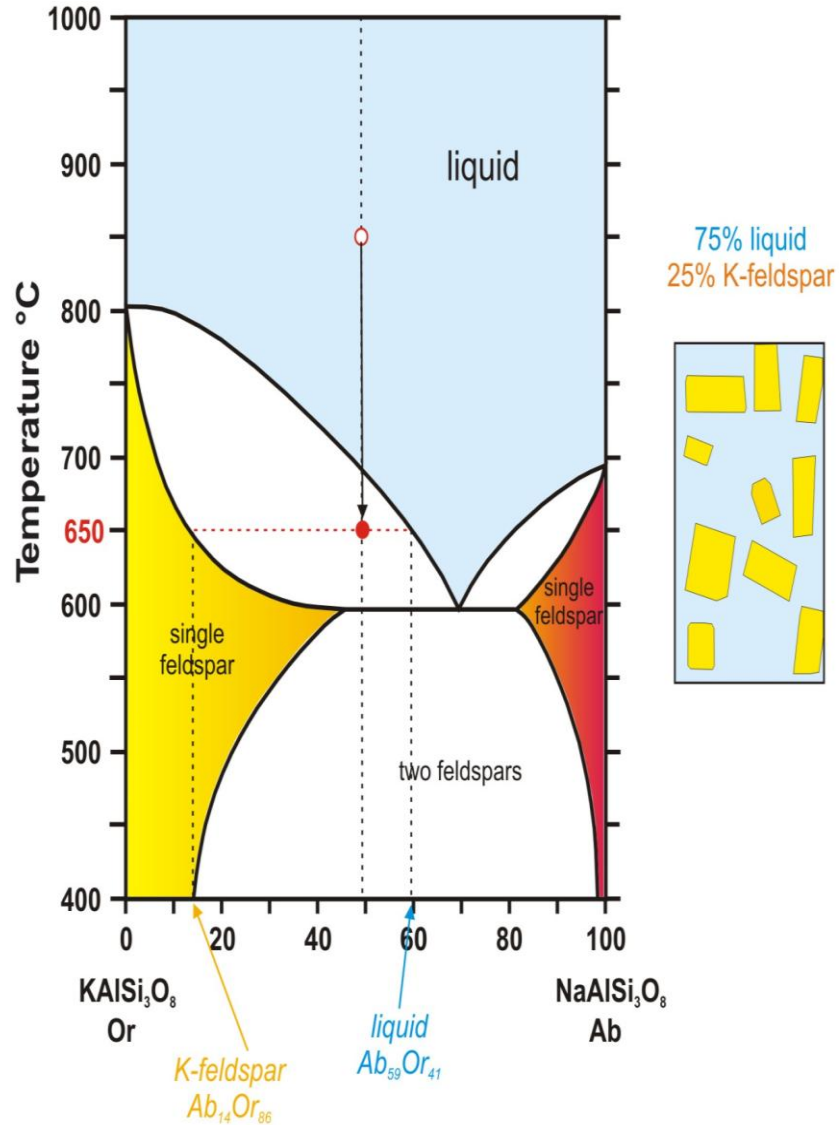
Variant 2 Describe the phase diagram of two-component system MgO-Al₂O₃



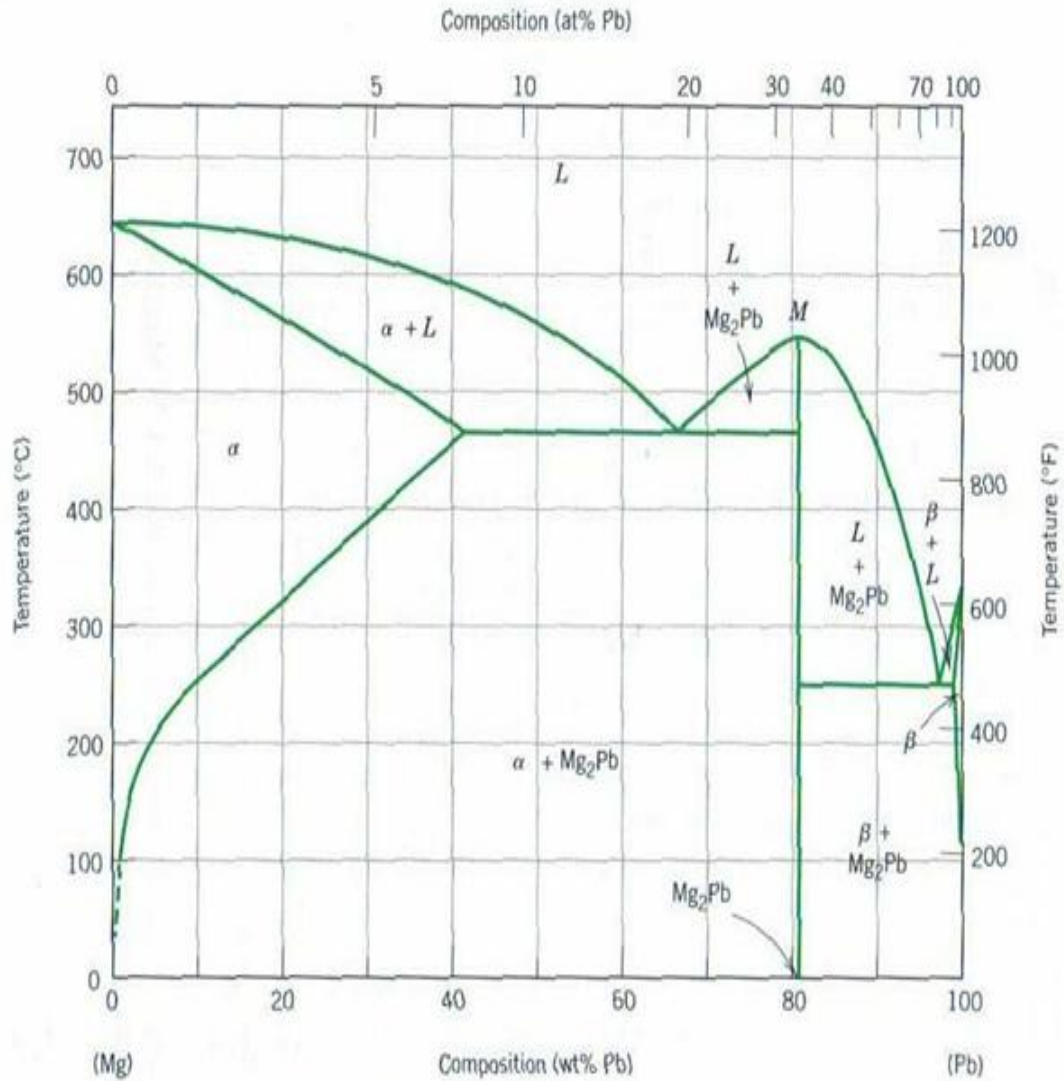
Variant 3 Describe the phase diagram of carbon dioxide



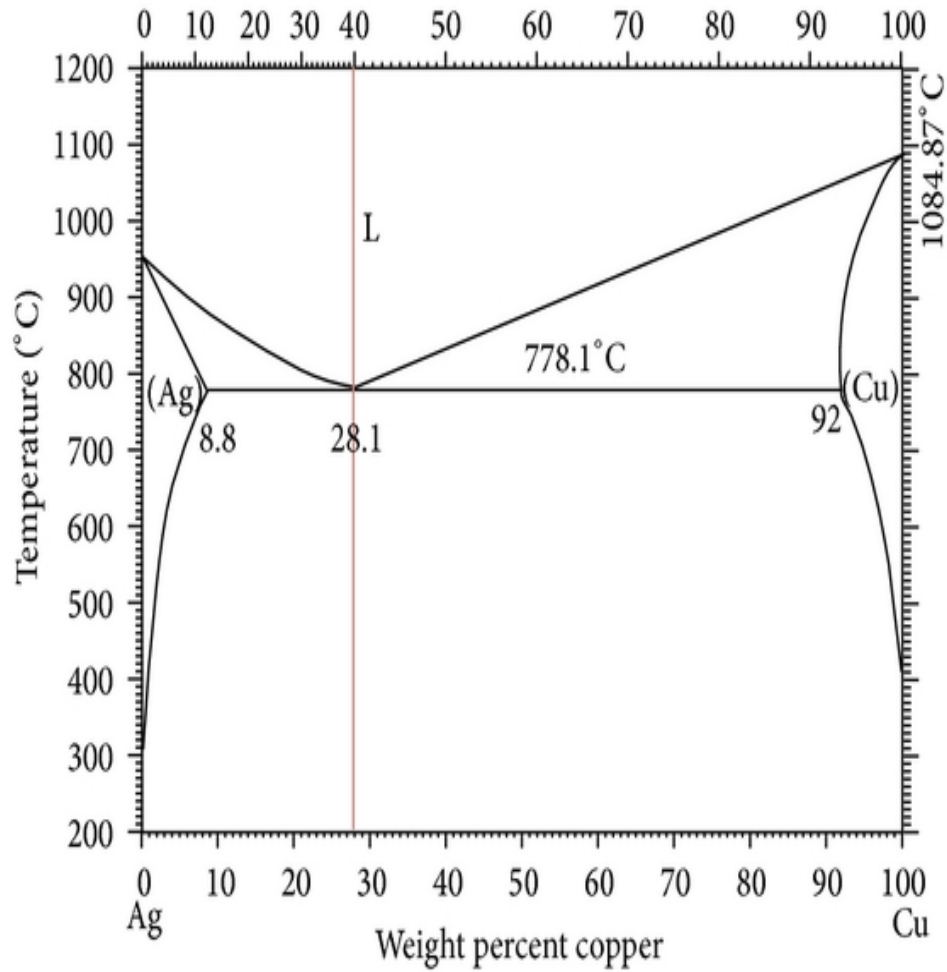
Variation 4 Describe the phase diagram of two-component system KNaSi_3O_8 - $\text{NaAlSi}_3\text{O}_8$



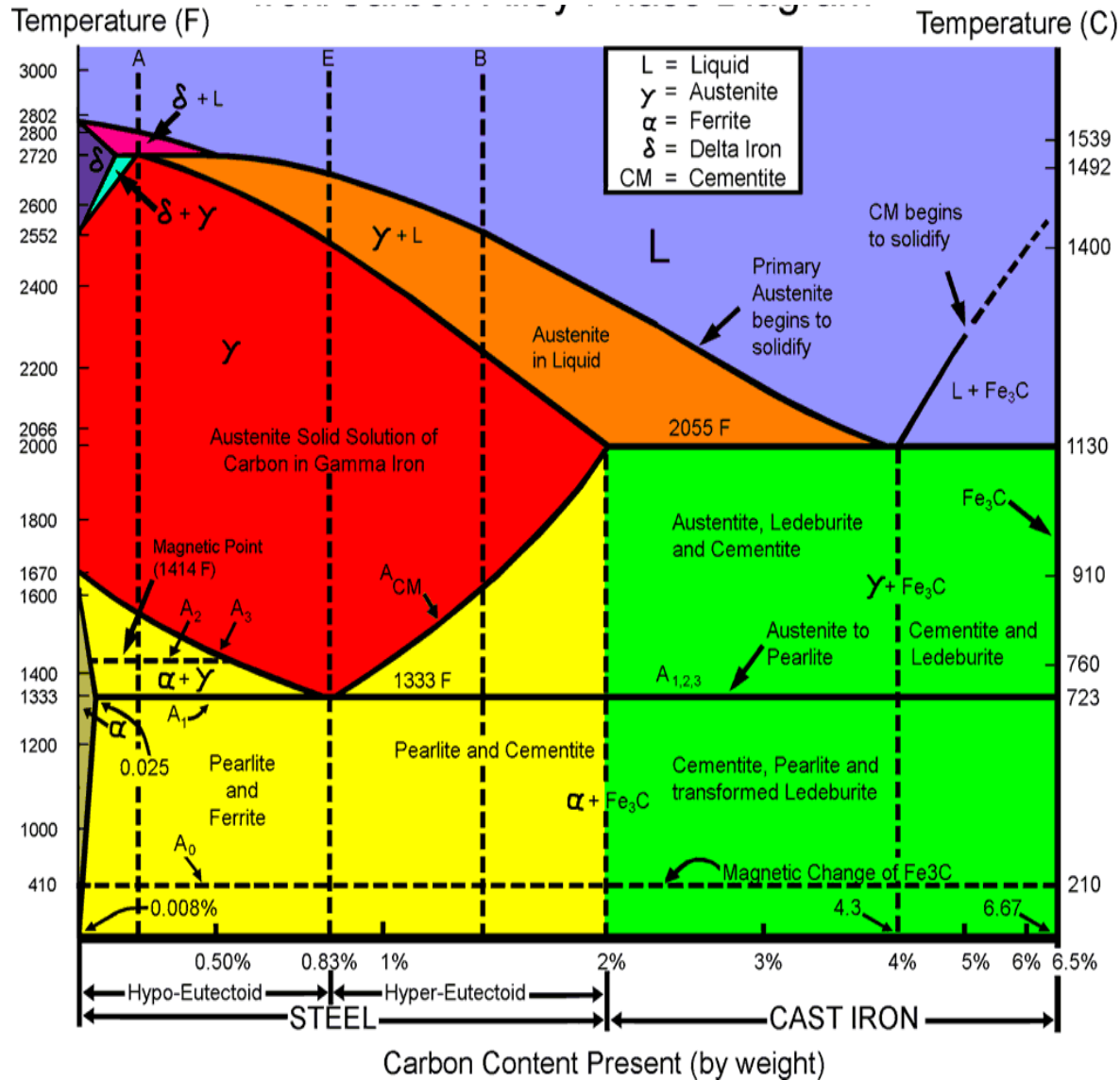
Variation 5 Describe the phase diagram of two-component system Mg-Pb



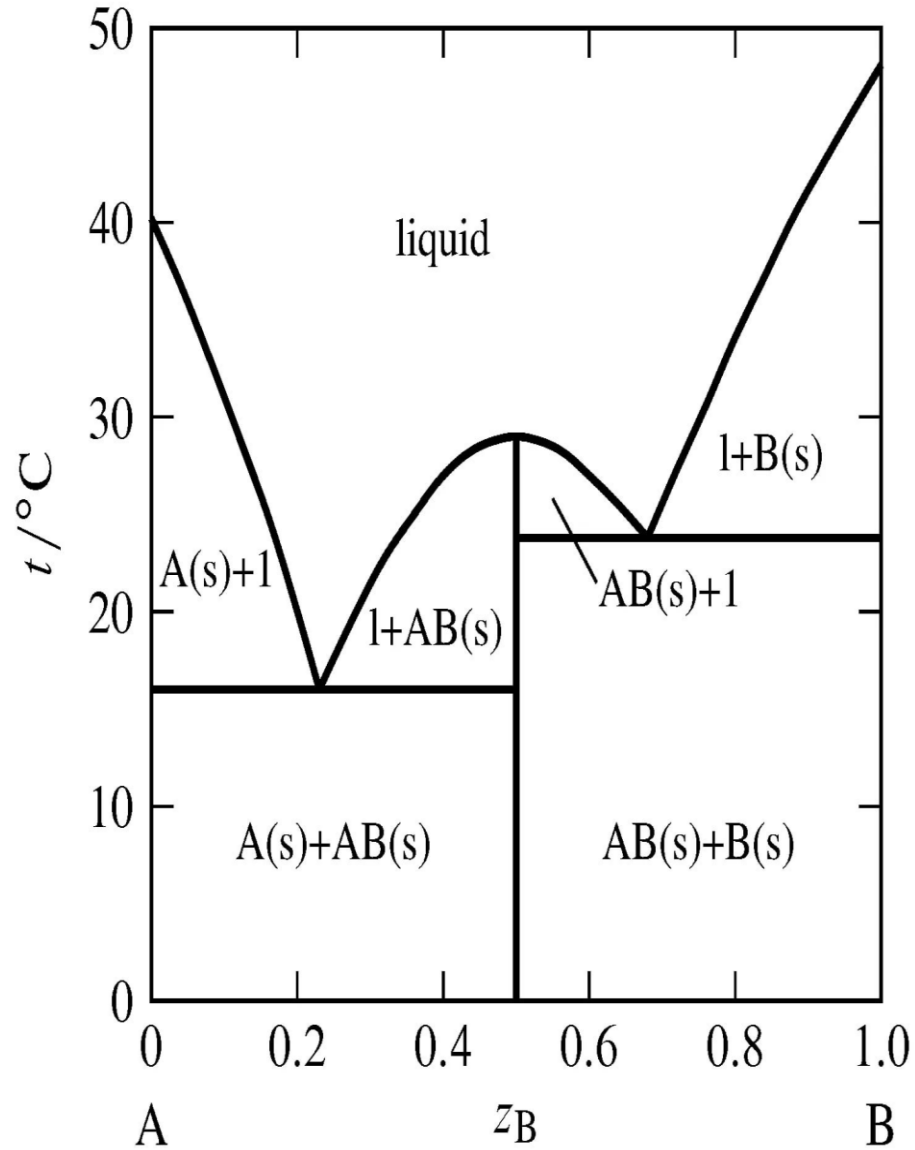
Variant 6 Describe the phase diagram of two-component system Cu-Ag



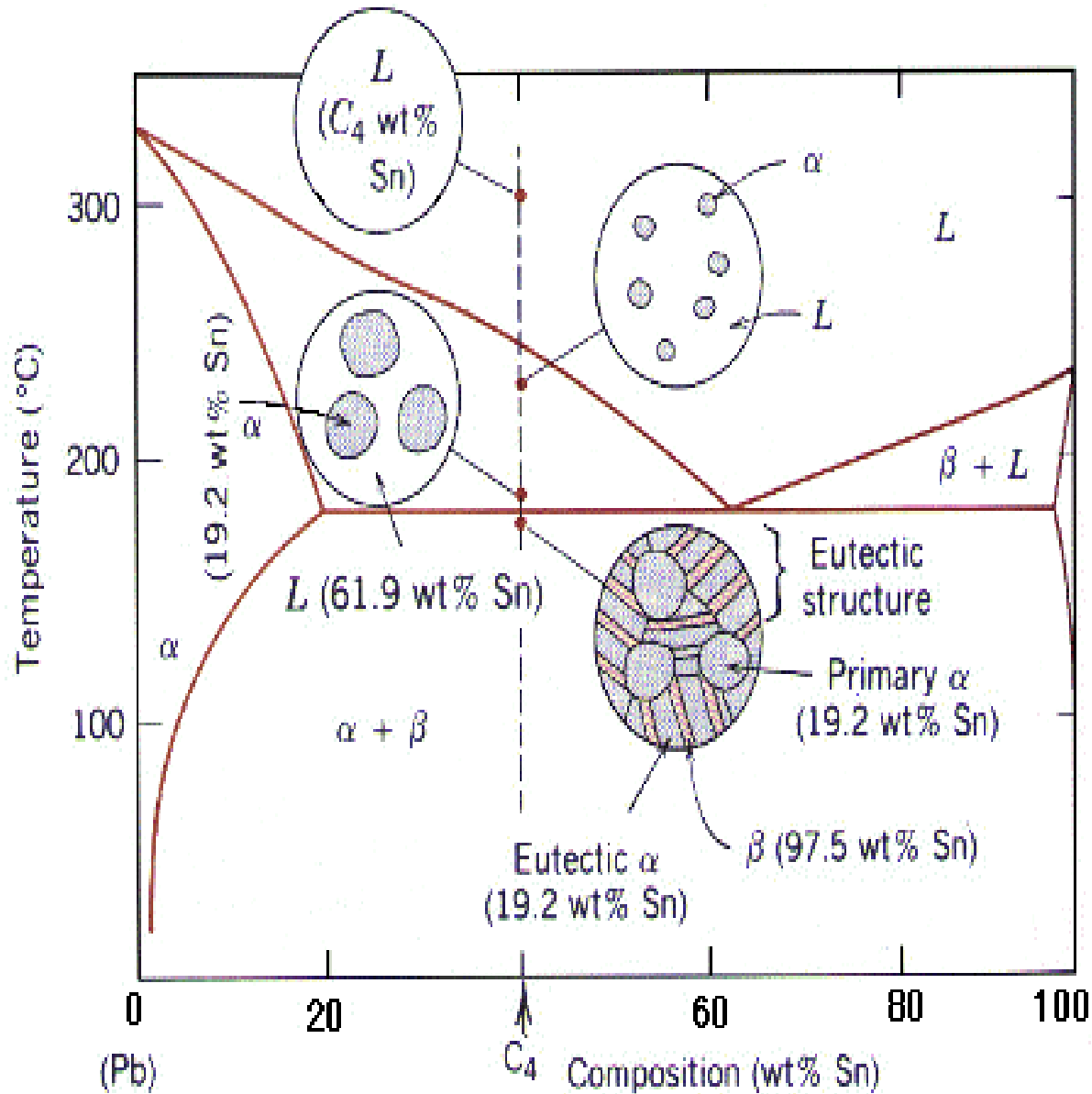
Variant 7 Describe the phase diagram of two-component system Iron-Carbon



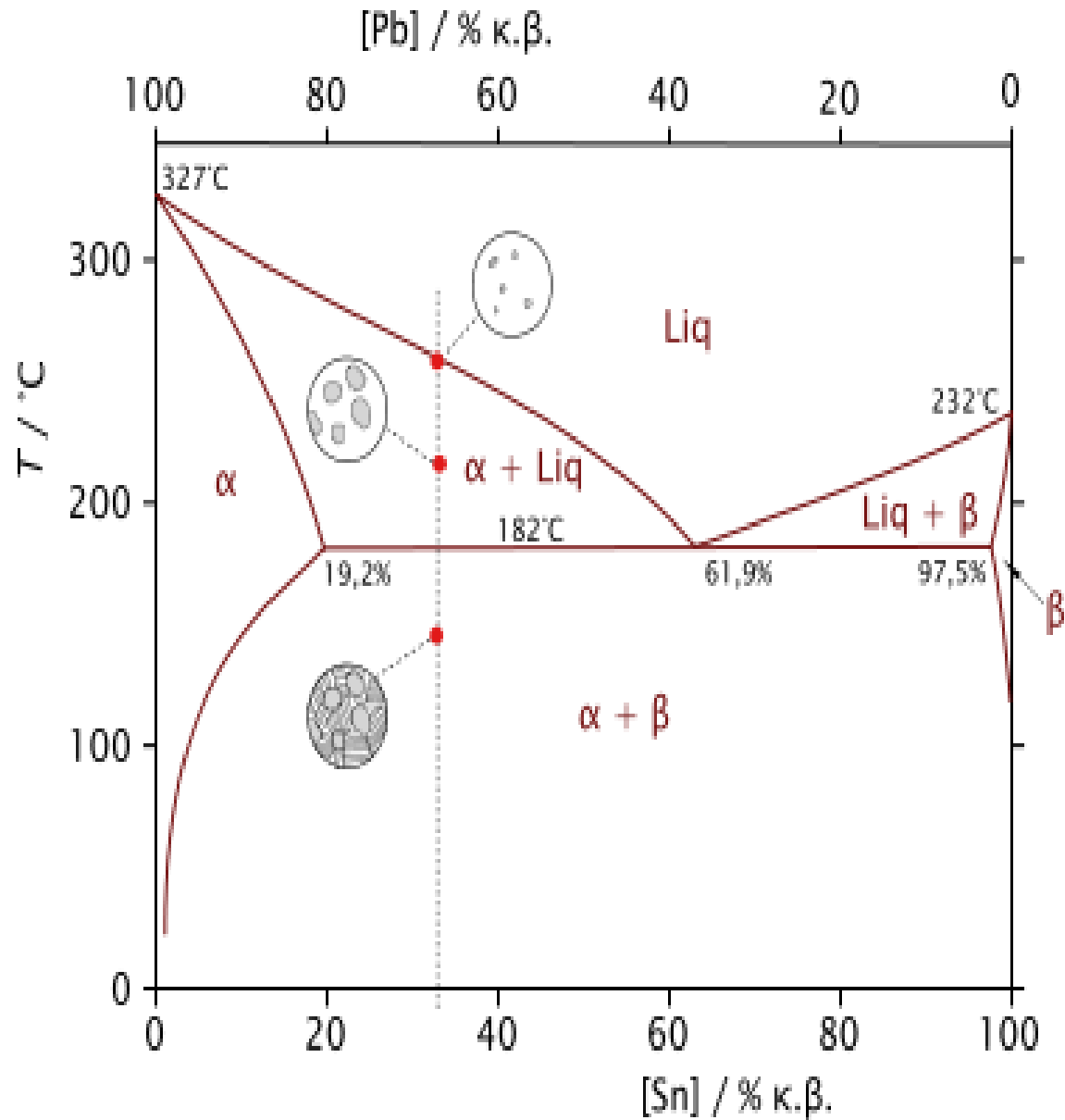
Variante 8 Describe the phase diagram of two-component system



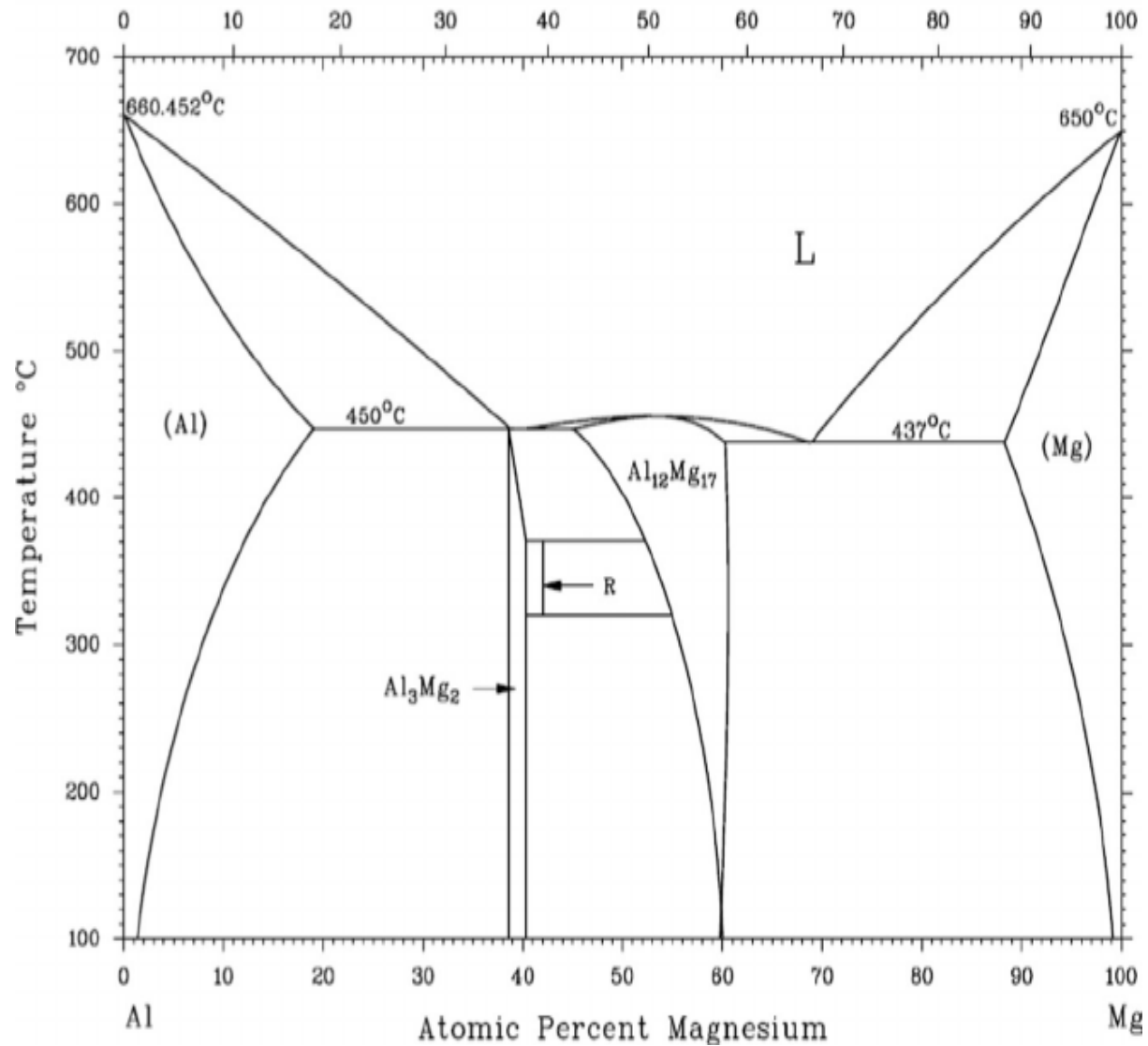
Variant 9 Describe the phase diagram of two-component system Pb-Sn



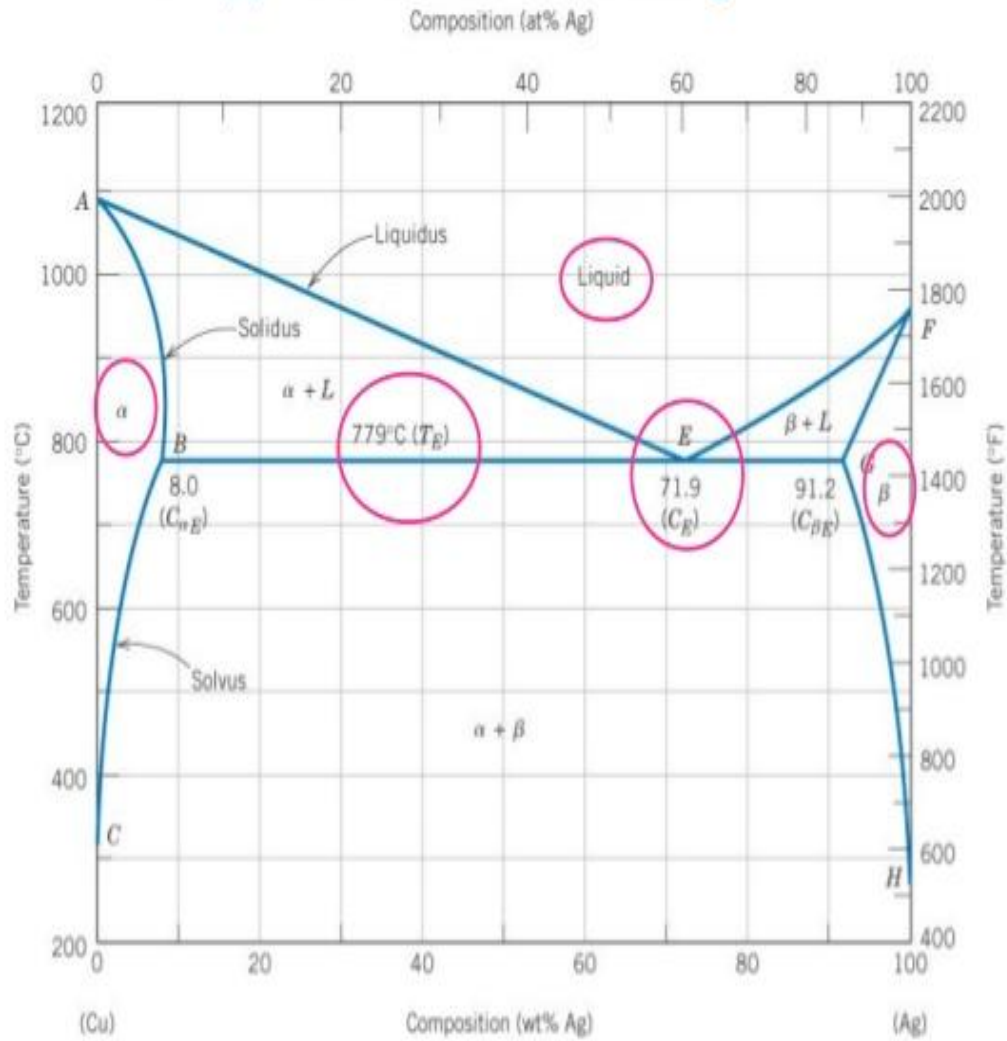
Variant 10 Describe the phase diagram of binary system Sn - Pb



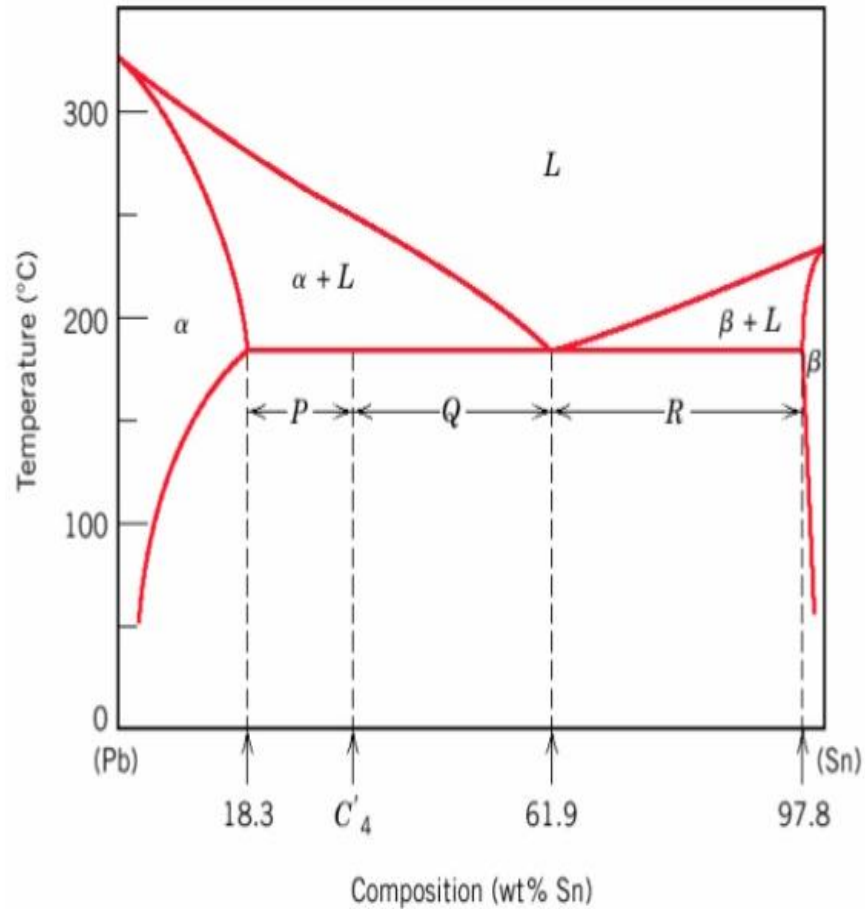
Variant 11 Describe the phase diagram of binary system Al-Mg



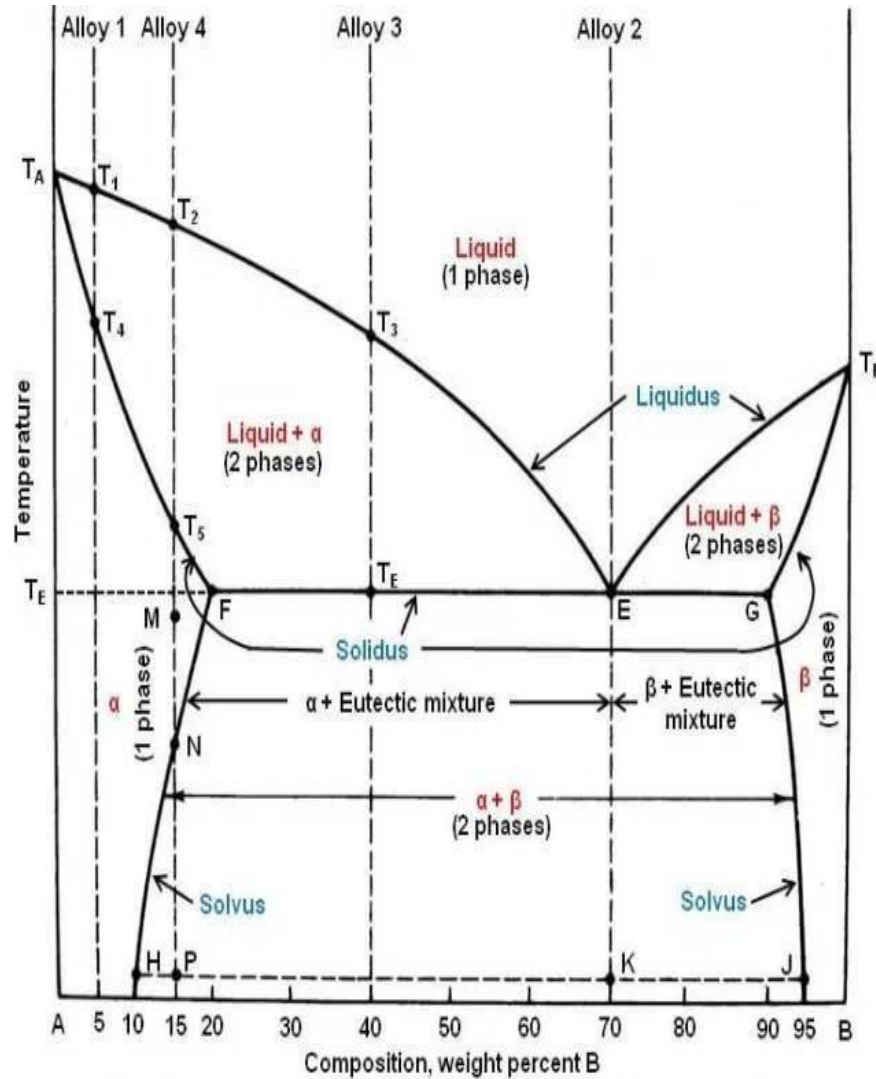
Variant 12 Describe the phase diagram of binary system Ag-Cu



Variant 13 Describe the phase diagram of binary system Sn-Pb

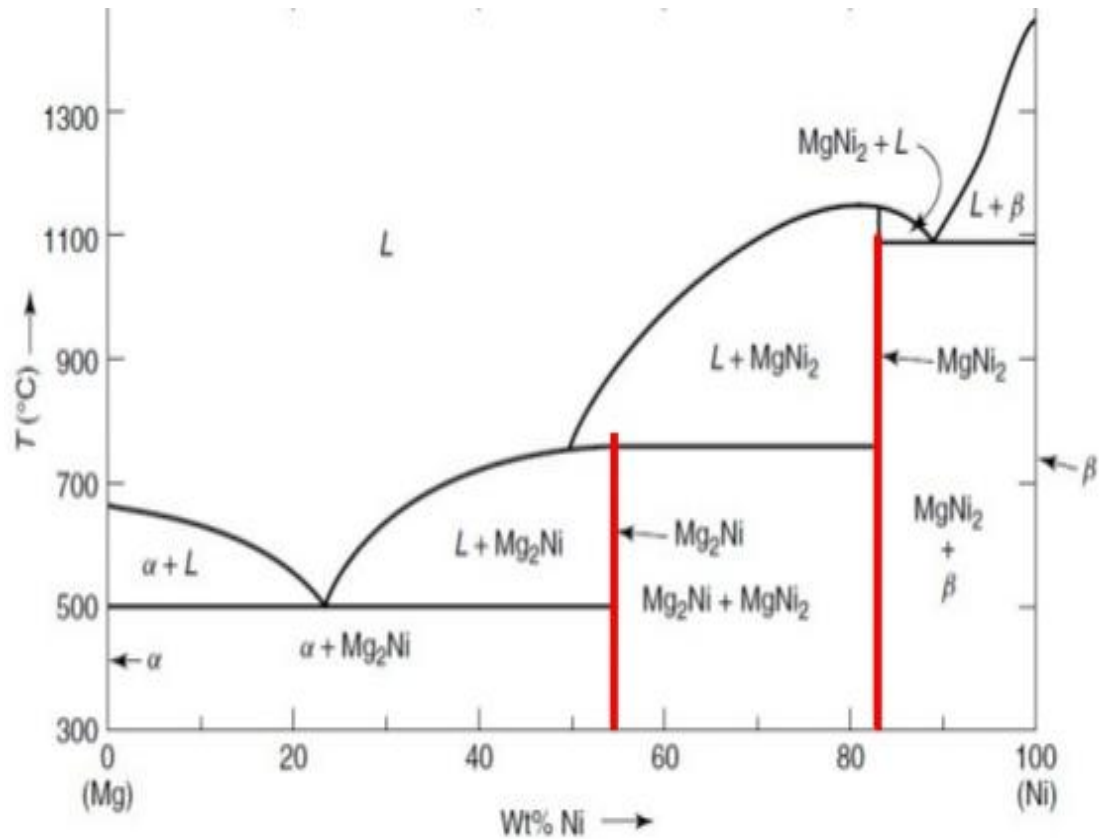


Variant 14 Describe the phase diagram of binary system

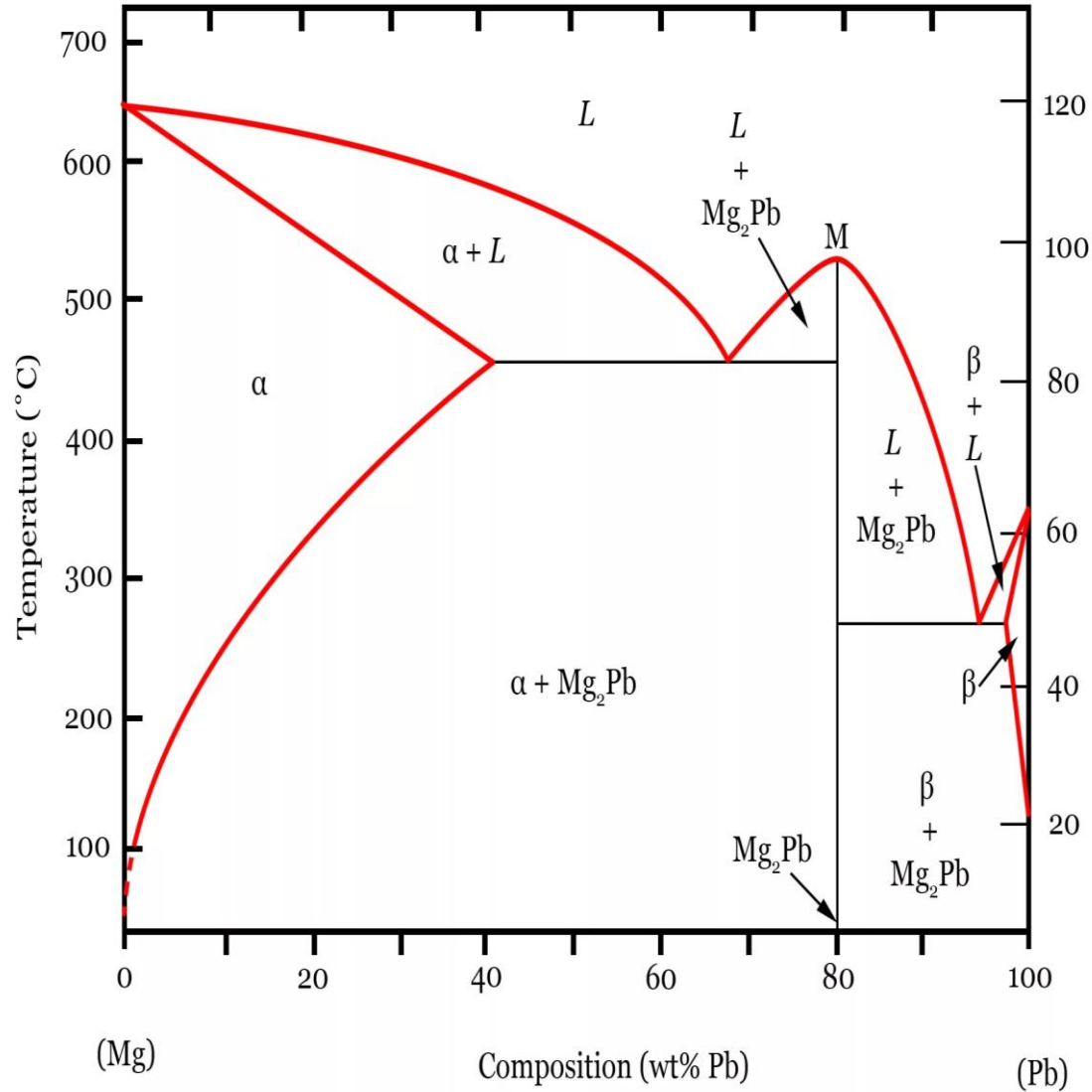


Phase Diagram of Two Metals only Partly Soluble in the Solid State

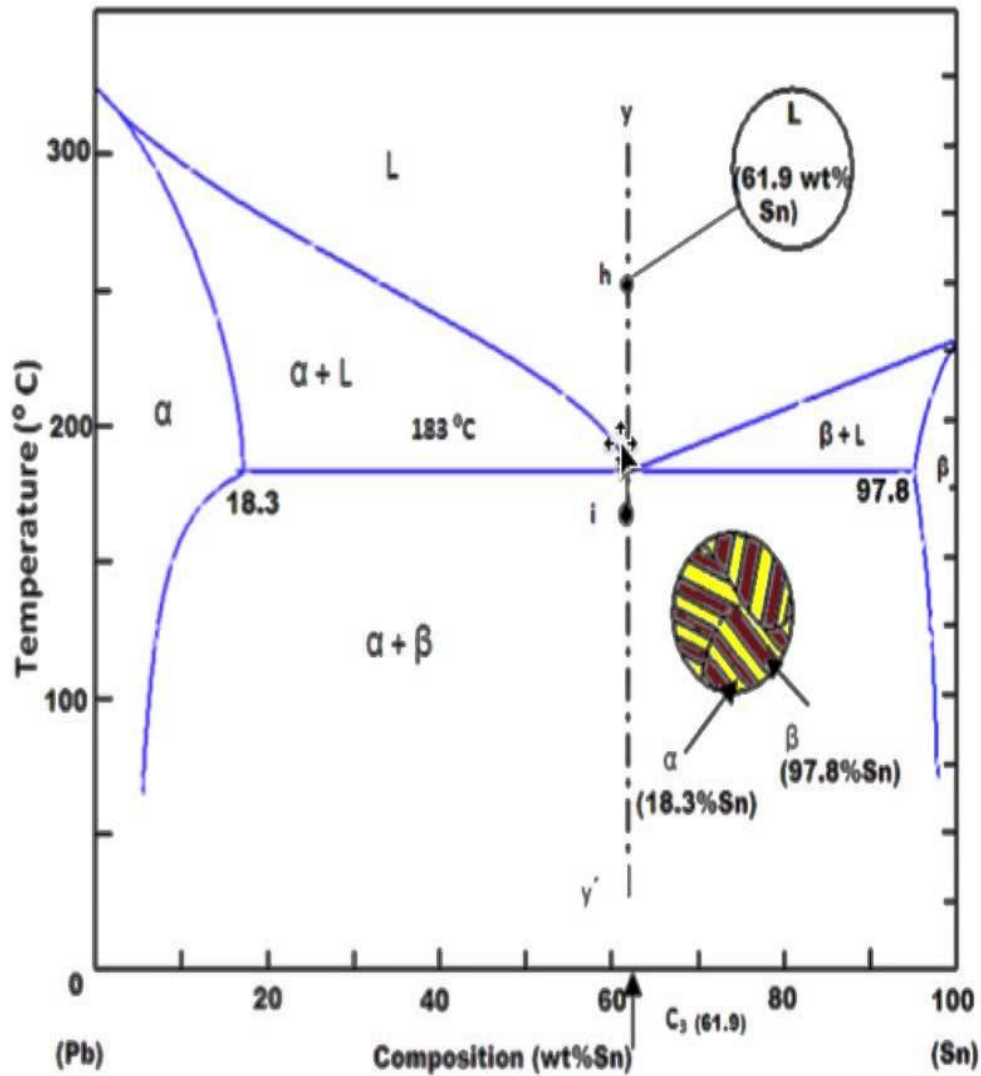
Variant 15 Describe the phase diagram of binary system Mg-Ni



Variant 16 Describe the phase diagram of binary system Mg-Pb



Variant 17 Describe the phase diagram of binary system Sn-Pb



Variant 18 Describe the phase diagram of sulfur

